

NEEDS ASSESSMENT

2024 – 2026



Acknowledgments

Union County First Steps would like to thank the community, Union County School District, Union County First Steps board, ISI Consulting, and the Early Childhood Council members for their help with the 2024-2026 Needs Assessment.

“The project described was supported through South Carolina First Steps by the Preschool Development Grant Birth through Five Initiative (PDG B-5), Grant Number 90TP0080-02-01 from the Office of Child Care, Administration for Children and Families, U.S. Department of Health and Human Services.”

Needs Assessment Process

CONVENE

Held two community convenings with 20 participants and developed a vision for young children and their families

October 2022 – January 2023



UNDERSTAND

Reviewed local data and map assets to understand the state of young children, their families, and the early childhood system

October 2022 – March 2023

PRIORITIZE

Organized the insight gathered from the convenings and data to prioritize the concerns, needs, and gaps the partnership wants to address and formalized Needs Assessment

January 2023 – March 2023



Union County Asset Map

BabyNet

Local
Businesses

DHEC



Carolina
Community
Actions

Local
Churches



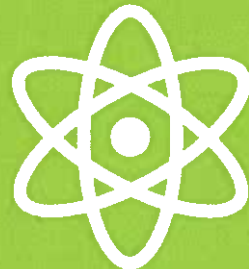
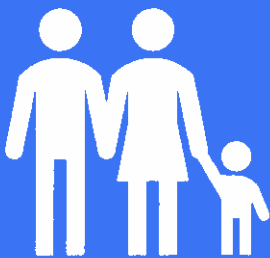
RobinHood
Group

DDSN

ReGenesis
Health Care

Jonesville
Head Start &
Early Head
Start

Union
County Arts
Council



Lion's Club

Union
County DSS

**Union County
Asset Map**
continued

Union
County Fire
Department



Union
County
Police
Department

Union
Medical
Center

Union
County First
Steps

Union
County
School
District

Union
County
Pregnancy
Center

United Way
of Piedmont



Union
County
Schools

Union
County
Recreation
Department

USC- Union

Union
County
Library
System

Union
County
Sheriff's
Office



Woodmen
Life

Priorities: Summary

1. REQUIRED

Build trust with parents and the community. (Indicator: Number of individuals reached and types of activities).

2. REQUIRED

Continue to strengthen partnerships and collaborations in both Union and Spartanburg County. (Indicator: Number of organizations reached and number of partner agreements).

3. REQUIRED

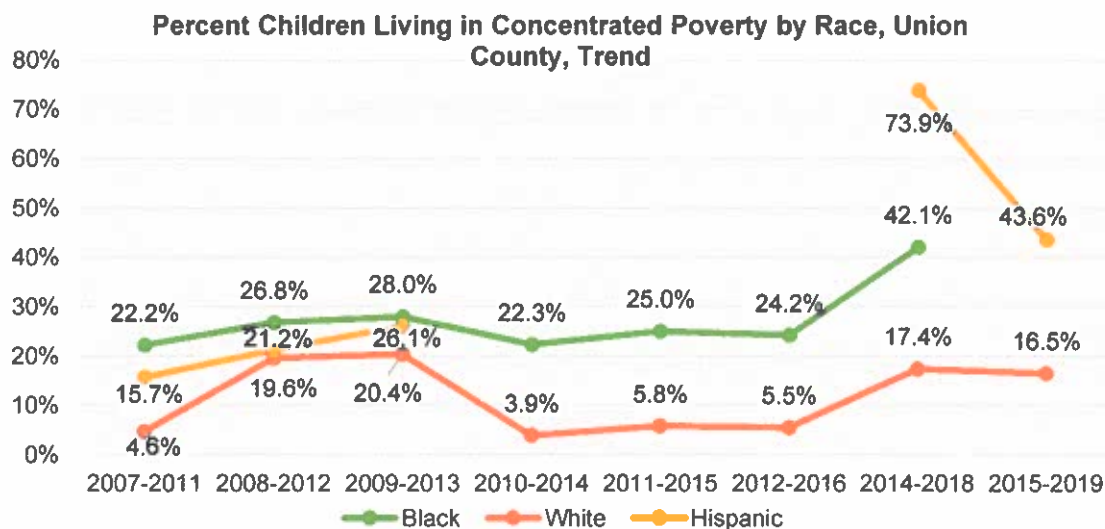
Continuously wrap around the parent/grandparent and child moving through education systems. (Indicator: Type of activities and numbers reached and success stories).

Priority One: Build trust with parents and the community.

Data point

Data source

Participants stressed how important trust is needed especially with working with populations experiencing childhood trauma and poverty. One participant shared that “you can’t teach kids skills that the parents don’t have.” The latest data show that 58% of Union County adults report having experienced at least one Adverse Childhood Experience (ACE).



Poverty Rates

Poverty rates can (and should) be examined at several levels: individual poverty, family poverty, household poverty, child poverty, and levels of poverty. Poverty metrics should also be disaggregated by race since Black and Hispanic residents have significantly higher poverty rates.

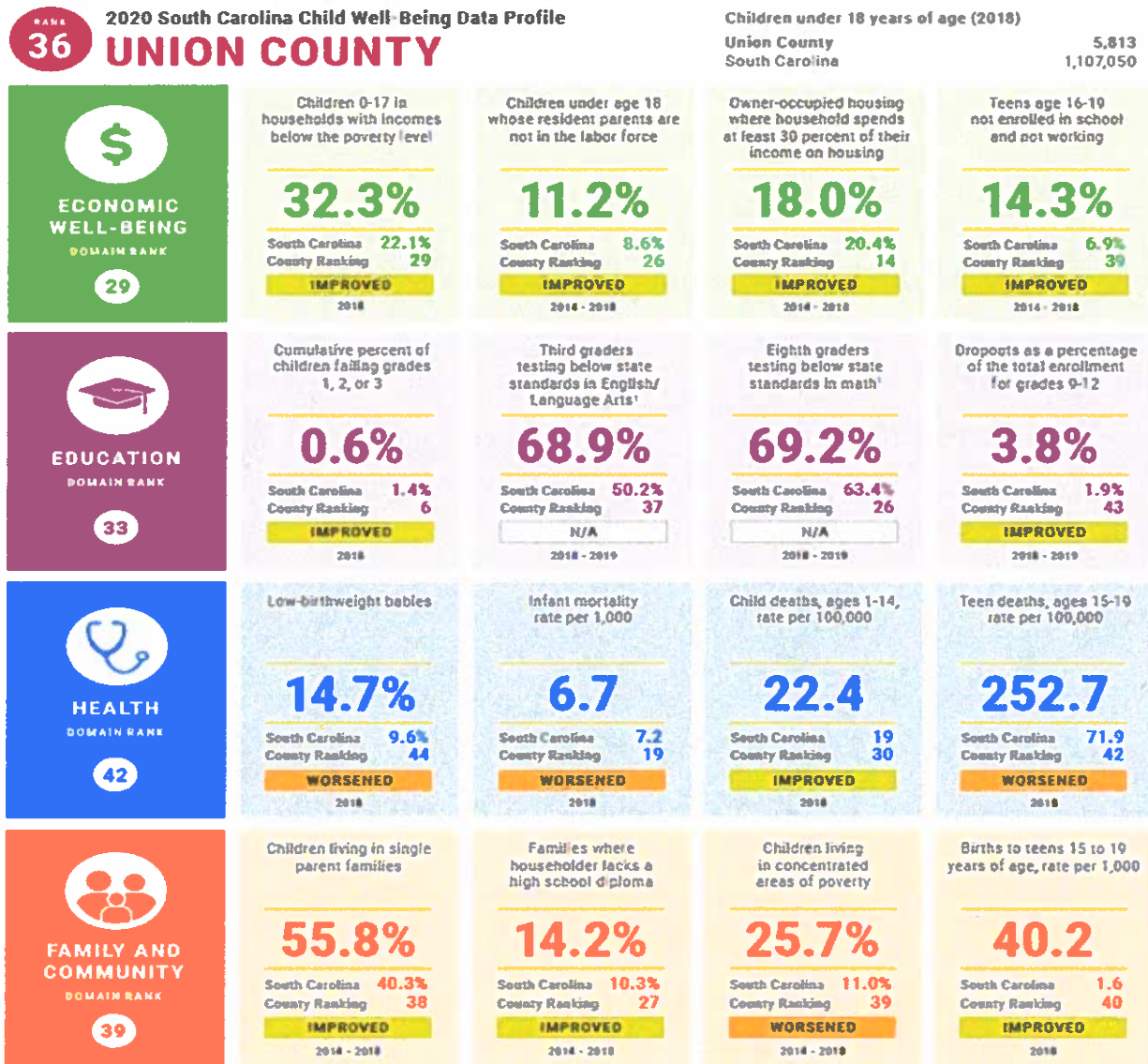
As of 2021, 5,614 residents of Union County (20.9% of the county population) live below Federal Poverty Level (FPL), including 2,056 (35.9%) of the county’s children. Both of these rates are significantly higher than the state averages of 14.5% for all residents and 20.8% for children

Priority Two: Continue to strengthen partnerships and collaboration

Data point

Data source

For overall wellbeing for children, Union County ranks 36th of the state's 46 counties.



Priority Three: Continuously wrap around the parent/grandparent and child moving through education systems.

Data point

Data source

The Children’s Trust of South Carolina ranks Union County 33rd among the state’s 46 counties for overall education in 2020. Compared to the state level average, Union County School District falls below the state average for overall readiness to learn in terms of foundational skills and behaviors that prepare students for instruction. South Carolina Department of Education monitors academic achievement across the spectrum of grades and via a variety of instruments. Currently, 71% of Union County third graders are below standards in reading. Mathematical performance at the 8th grade is also a critical metric. Currently, 86% of Union County eighth grade students fall below standards in math, markedly above the state average. The percentage of teens who are not enrolled in school and not a high school graduate has worsened in Union County since 2007 and is currently three times higher than the state average.

	2007-2011	2008-2012	2009-2013	2010-2014	2011-2015	2012-2016	2013-2017	2014-2018	2015-2019
Union	4.5	4.4	4.3	3.0	8.0	8.6	10.8	10.9	12.4
S.C.	6.8	6.0	5.8	5.4	5.0	4.4	4.1	3.9	4.0

Next Steps



APPLY

Utilize the Strategic Plan to inform the partnership's Annual Formula Funding Grant Application

May 2023, May 2024, May 2025

MONITOR

Track the partnership's progress on implementing programs to fidelity and on achieving the Strategic Plan

July 2023 – June 2026

PLAN

Write the partnership's three-year Strategic Plan using the Needs Assessment

March 2023 – May 2023

IMPLEMENT

Execute the programs and services outlined in the Strategic Plan

July 2023 – June 2026